

Appendix 1 - Port Health Structure diagram, ports map and staffing chart

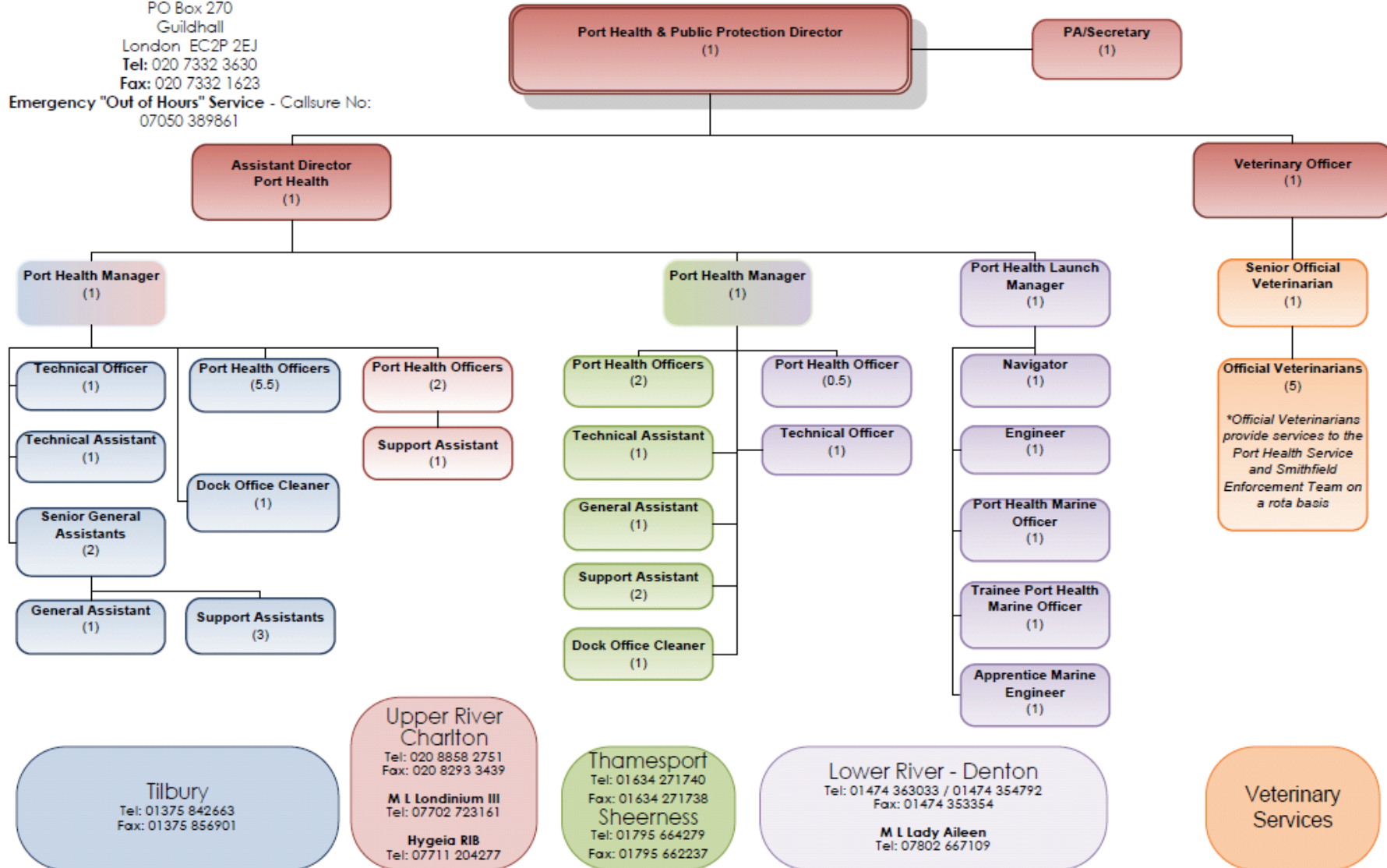
30/11/2011

Department of Markets and Consumer Protection Port Health & Public Protection Division Port Health Service

Head Office (Postal Address)

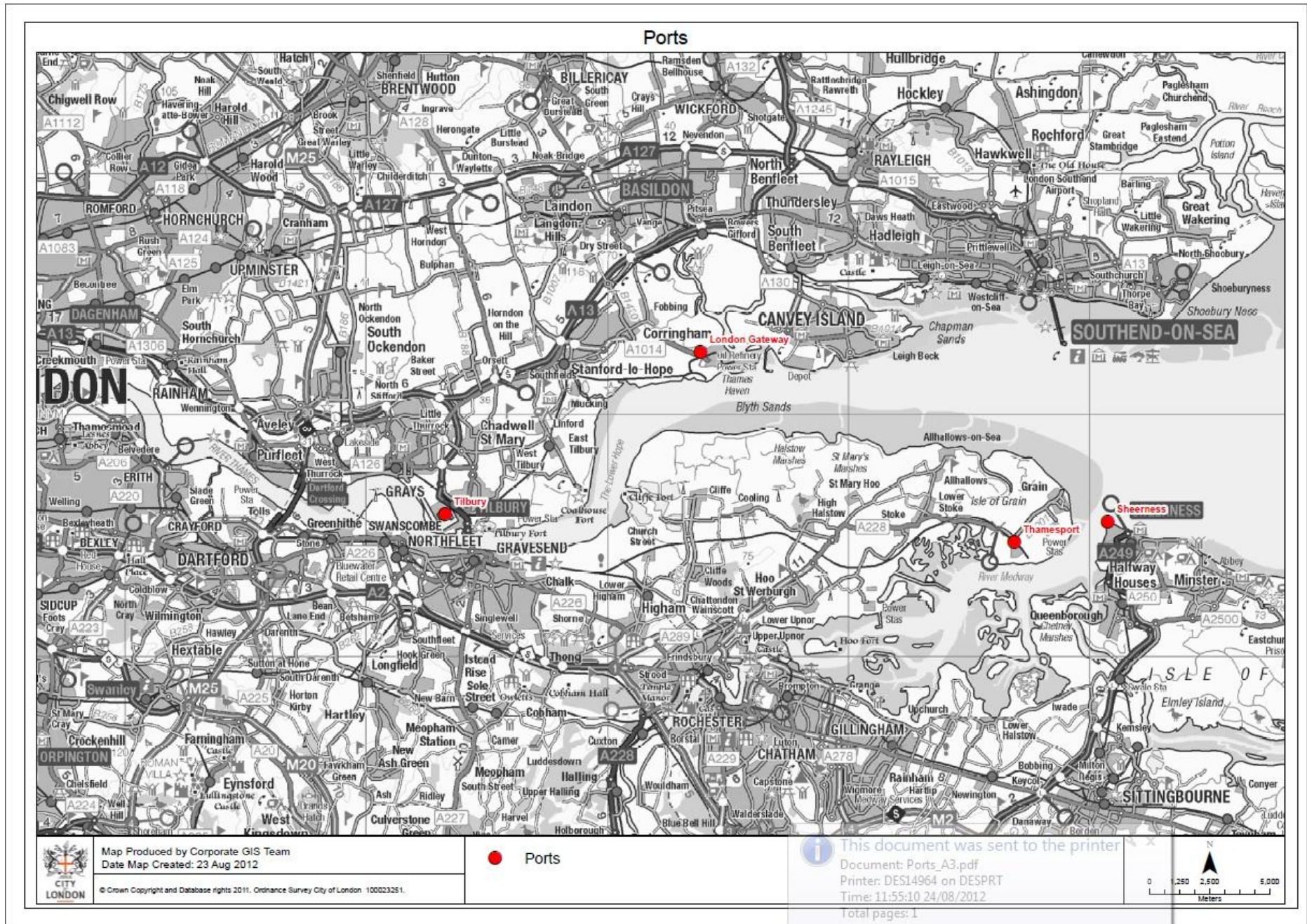
London Port Health Authority
City of London Corporation
PO Box 270
Guildhall
London EC2P 2EJ
Tel: 020 7332 3630
Fax: 020 7332 1623

Emergency "Out of Hours" Service - Callsure No:
07050 389861



**Official Veterinarians provide services to the Port Health Service and Smithfield Enforcement Team on a rota basis*

Appendix 1 - Port Health Structure diagram, ports map and staffing chart



Appendix 1 - Port Health Structure diagram, ports map and staffing chart

Port Health & Public Protection Division

Port Health Service

Ports	Staff
Tilbury	1 Port Health Manager 5 Port Health Officers 1 Senior Official Veterinarian 3 Official Veterinarian 1 Technical Officer 1 Technical Assistant 2 Senior General Assistants 1 General Assistant 3 Support Assistants
Upper River Charlton	2 Port Health Officers 1 Charlton Support Assistant
Thamesport/Sheerness	1 Port Health Manager 2 Port Health Officers 1 Official Veterinarian 1 Technical Assistant 1 General Assistant 1 Support Assistants